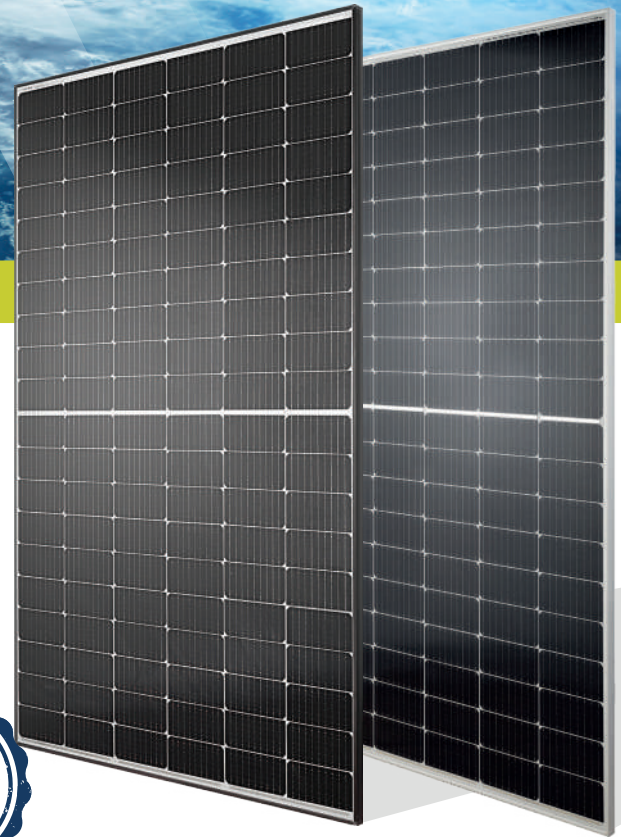
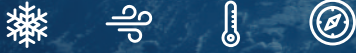


**HC MONO**  
**400 Watt**



**KEY FEATURES**

Our solar cells offer high conversion efficiency to ensure the highest quality.




Our high performing modules enable cost savings in mounting, cabling and labour of up to 15%.

The modules can withstand high wind-pressure, snow loads and extreme temperatures.

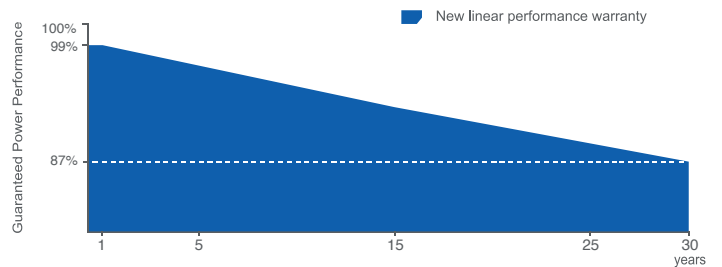
Passed IEC 5400 Pa mechanical loading test  
PID Resistance Available.

**QUALITY AND SAFETY**

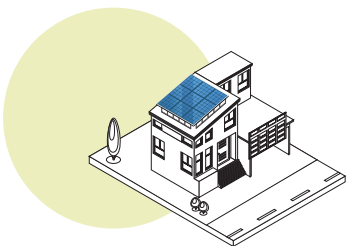


-  Industry leading power output warranty  
30 years/87,4%
-  30-year warranty on materials & workmanship
-  Fire Rating: Class 1

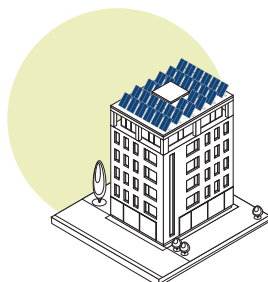
**PREMIUM PERFORMANCE WARRANTY**



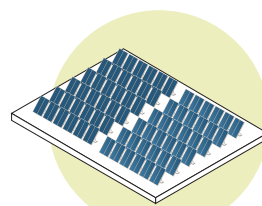
**APPLICATIONS**



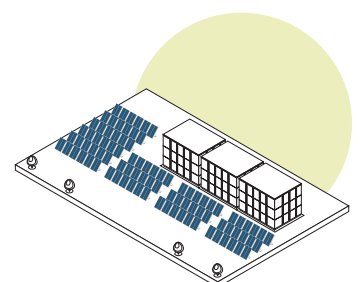
On-grid residential roof-tops



On-grid commercial - industrial roof-tops

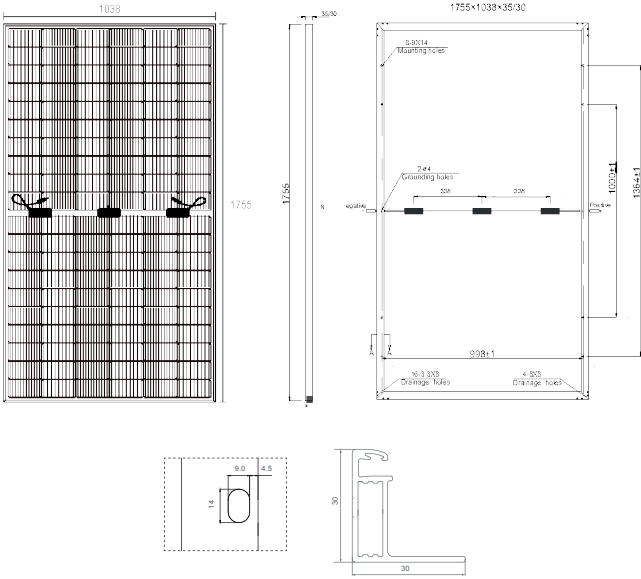


Solar power plants



Off-grid systems

## ENGINEERING DRAWINGS




## PACKAGING CONFIGURATION

		Pallet on top:	Pallet below:
Standard packaging (pallet)	30mm	40/41	36/37
	35mm	35	31
Module quantity per 40' container	30mm: 988/1014 - 35mm: 858 pcs		
Pallet per container	26		

## SPECIFICATIONS

Module Type <sup>(1)</sup>	TKA400M-120	
	STC <sup>(2)</sup>	NMOT <sup>(3)</sup>
Maximum Power (Pmax)	400Wp	289Wp
Maximum Power Voltage (Vmp)	34.7V	31.9V
Maximum Power Current (Imp)	11.53A	9.04A
Open-circuit Voltage (Voc)	41.00V	38.26V
Short-circuit Current (Isc)	12.13A	9.49A
Module Efficiency (%)	21.96%	
Voc and Isc tolerance	±3%	
Operating Temperature(°C)	-40°C~+85°C	
Maximum system voltage	1500V	
Maximum series fuse rating	20A	
Temperature coefficients of Pmax	-0.29%/°C	
Temperature coefficients of Voc	-0.25%/°C	
Temperature coefficients of Isc	0.048%/°C	
Nominal operating cell temperature (NOCT)	45±2 °C	

STC  Irradiance 1000W/m<sup>2</sup>



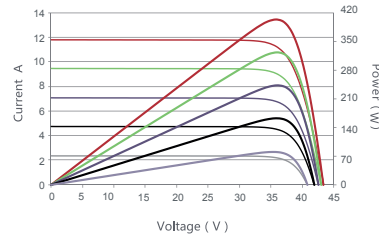
Module Temperature 25°C



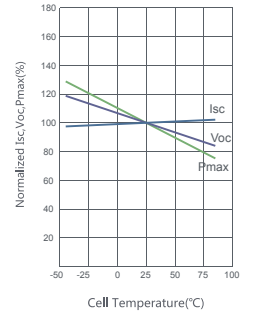
AM=1.5

## ELECTRICAL PERFORMANCE & TEMPERATURE DEPENDENCE

Current-Voltage & Power-Voltage Curves (400W)



Temperature Dependence of Isc, Voc, Pmax



## MECHANICAL CHARACTERISTICS

Cell Type	Orion N-Type TOPCon Mono-crystalline (166mm×83mm)
No. of cells	120 (6×20)
Dimensions	1755×1038×30mm (±2mm) / 1755×1038×35mm (±2mm)
Weight	20.0kg
Front Glass	3.2mm, AR Coating, High Transmission, Low Iron, Tempered Glass
Frame	Anodized Aluminium Alloy(Silver/Black optional)
Junction Box	IP68 Rated
Output Cables	TÜV 1×4.0mm <sup>2</sup> / UL 12AWG, Length:1100mm