

HC MONO
550 - 605 Watt



KEY FEATURES

Our solar cells offer high conversion efficiency to ensure the highest quality.

Our high performing modules enable cost savings in mounting, cabling and labour of up to 15%.

The modules can withstand high wind-pressure, snow loads and extreme temperatures.

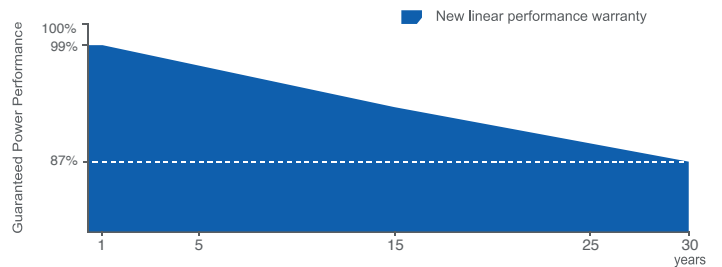
Passed IEC 5400 Pa mechanical loading test
PID Resistance Available.

QUALITY AND SAFETY

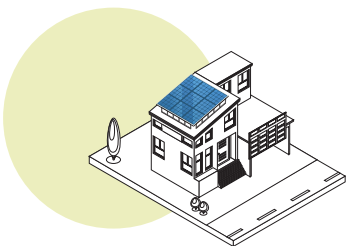


- 🕒 Industry leading power output warranty
30 years/87,4%
- 🕒 30-year warranty on materials & workmanship
- 🔥 Fire Rating: Class 1

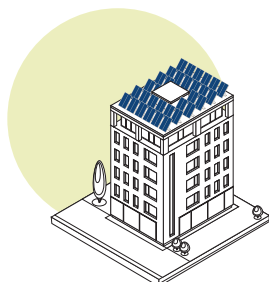
PREMIUM PERFORMANCE WARRANTY



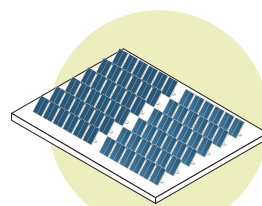
APPLICATIONS



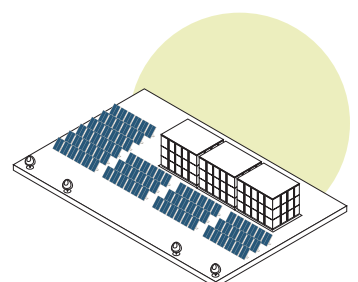
On-grid residential roof-tops



On-grid commercial - industrial roof-tops

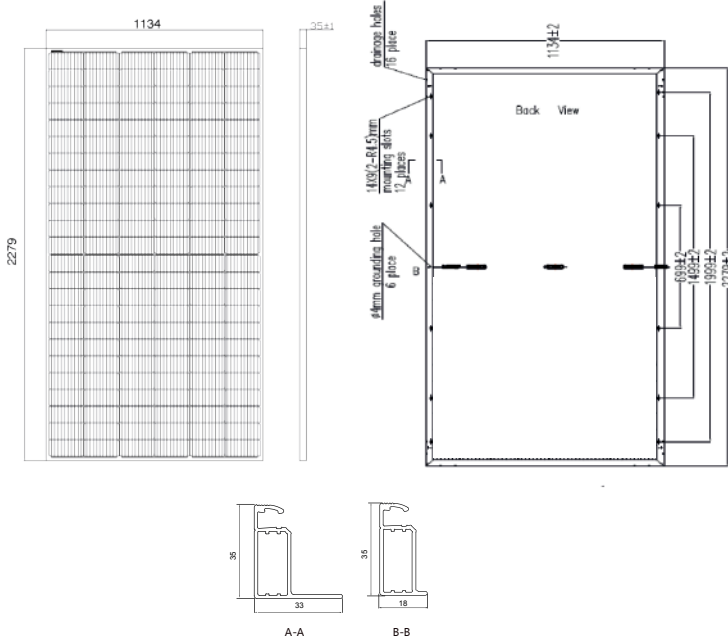


Solar power plants



Off-grid systems

ENGINEERING DRAWINGS



PACKAGING CONFIGURATION

Standard packaging	31 pcs / pallet
Module quantity per 40' container	620 pcs
Pallet per container	20

SPECIFICATIONS

STC



Irradiance 1000W/m²



Module Temperature 25°C



AM=1.5

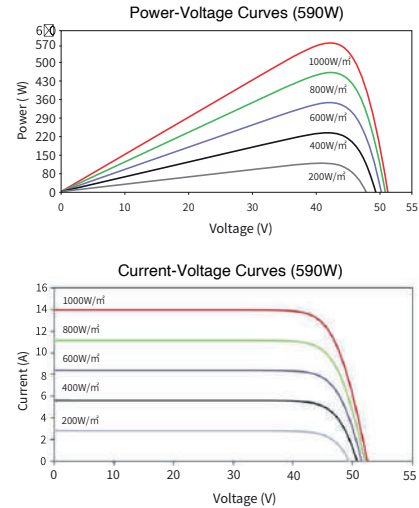
Module Type ⁽¹⁾	TKA550M-144		TKA555M-144		TKA560M-144		TKA565M-144		TKA570M-144		TKA575M-144	
	STC ⁽²⁾	NMOT ⁽³⁾	STC ⁽²⁾	NMOT ⁽³⁾	STC ⁽²⁾	NMOT ⁽³⁾	STC ⁽²⁾	NMOT ⁽³⁾	STC ⁽²⁾	NMOT ⁽³⁾	STC ⁽²⁾	NMOT ⁽³⁾
Maximum Power (Pmax)	550Wp	412Wp	555Wp	416Wp	560Wp	420Wp	565Wp	424Wp	570Wp	428Wp	575Wp	432Wp
Maximum Power Voltage (Vmp)	41.6V	39.21V	41.8V	39.29V	42V	39.37V	42.2V	39.45V	42.4V	39.52V	42.6V	39.6V
Maximum Power Current (Imp)	13.23A	10.51A	13.3A	10.59A	13.34A	10.67A	13.39A	10.75A	13.45A	10.83A	13.5A	10.91A
Open-circuit Voltage (Voc)	49.49V	47.62V	49.73V	47.76V	49.97V	47.9V	50.21V	48.04V	50.45V	48.18V	50.69V	48.32V
Short-circuit Current (Isc)	13.99A	11.26A	14.05A	11.33A	14.12A	11.4A	14.18A	11.47A	14.24A	11.54A	14.3A	11.61A
Module Efficiency (%)	21.28%		21.48%		21.67%		21.86%		22.06%		22.49%	

Module Type ⁽¹⁾	TKA580M-144		TKA585M-144		TKA590M-144		TKA595M-144		TKA600M-144		TKA605M-144	
	STC ⁽²⁾	NMOT ⁽³⁾	STC ⁽²⁾	NMOT ⁽³⁾	STC ⁽²⁾	NMOT ⁽³⁾	STC ⁽²⁾	NMOT ⁽³⁾	STC ⁽²⁾	NMOT ⁽³⁾	STC ⁽²⁾	NMOT ⁽³⁾
Maximum Power (Pmax)	580Wp	436Wp	585Wp	440Wp	590Wp	444Wp	595Wp	448Wp	600Wp	452Wp	605Wp	456Wp
Maximum Power Voltage (Vmp)	42.8V	39.69V	43V	39.81V	43.20V	39.90V	43.40V	39.99V	43.60V	40.08V	43.80V	40.17V
Maximum Power Current (Imp)	13.56A	10.99A	13.61A	11.05A	13.66A	11.13A	13.71A	11.21A	13.77A	11.28A	13.82A	11.36A
Open-circuit Voltage (Voc)	50.93V	48.46V	51.17V	48.6V	51.41V	48.74V	51.65V	48.88V	51.89V	49.02V	52.13V	49.16V
Short-circuit Current (Isc)	14.36A	11.68A	14.42A	11.75A	14.48A	11.82A	14.53A	11.89A	14.59A	11.96A	14.65A	12.03A
Module Efficiency (%)	22.45%		22.64%		22.84%		23.02%		23.22%		23.41%	

Operating Temperature(°C) -40°C~+85°C
 Temperature coefficients of Pmax -0.29%/°C
 Temperature coefficients of Isc 0.048%/°C

Maximum system voltage 1500V DC
 Maximum series fuse rating 25A
 Temperature coefficients of Voc -0.25%/°C
 Nominal operating cell temperature (NOCT) 45±2 °C

ELECTRICAL PERFORMANCE & TEMPERATURE DEPENDENCE



MECHANICAL CHARACTERISTICS

Cell Type	Orion N-Type TOPCon Mono-crystalline
No. of cells	144 (6×24)
Dimensions	2279×1134×35mm (±2mm)
Weight	28.30kg
Front Glass	3.2mm, AR Coating, High Transmission, Low Iron, Tempered Glass
Frame	Anodized Aluminium Alloy (Silver/Black optional)
Junction Box	IP68 Rated
Output Cables	TÜV 1×4.0mm ² /UL 12AWG, Length:1200mm