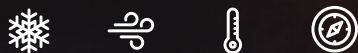


**HC MONO TB**  
**430 - 450 Watt**



**KEY FEATURES**

Our solar cells offer high conversion efficiency to ensure the highest quality.

Our high performing modules enable cost savings in mounting, cabling and labour of up to 15%.

The modules can withstand high wind-pressure, snow loads and extreme temperatures.

Passed IEC 5400 Pa mechanical loading test  
PID Resistance Available.

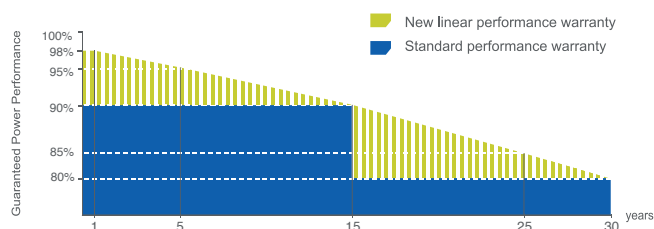


**QUALITY AND SAFETY**

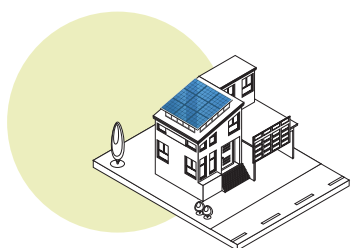
- Industry leading power output warranty  
 15 years/90%  
 30 years/80%
- 25-year warranty on materials & workmanship
- Fire Rating: Class 1



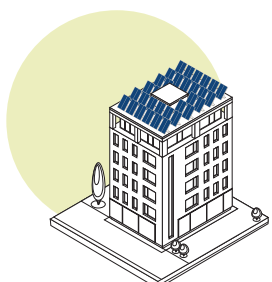
**PREMIUM PERFORMANCE WARRANTY**



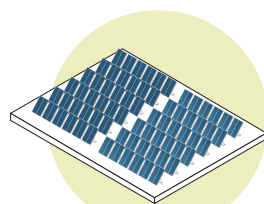
**APPLICATIONS**



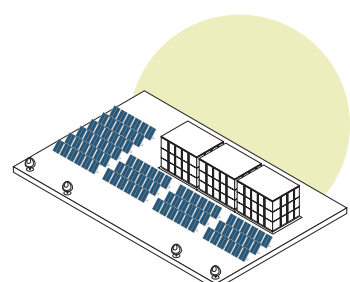
On-grid residential roof-tops



On-grid commercial - industrial roof-tops

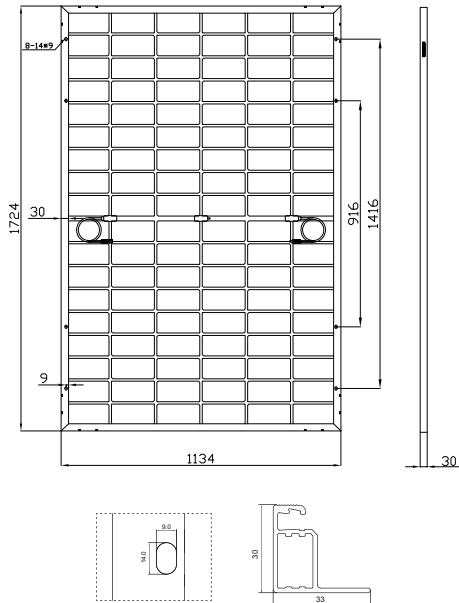


Solar power plants



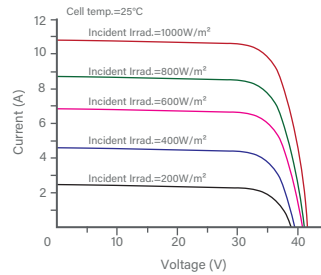
Off-grid systems

## ENGINEERING DRAWINGS

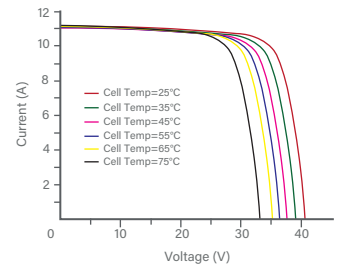


## ELECTRICAL PERFORMANCE & TEMPERATURE DEPENDENCE

Current-Voltage & Power-Voltage Curves at Different Irradiances



Current-Voltage Curves at Different Temperatures



## MECHANICAL CHARACTERISTICS

Cell Type	Orion N-Type Mono-crystalline (182x91mm)
No. of cells	108 (6x18)
Dimensions	1724x1134x30mm
Weight	24 kg
Front Glass	3.2mm, Anti-Reflecting Coating
Junction Box	Anodized Aluminium Alloy / IP68 Rated
Output Cables	TÜV 1x4.0mm²/UL 12AWG, Length:1100mm

## PACKAGING CONFIGURATION

Standard packaging	72 pcs / pallet
Module quantity per 20' container	N/A
Module quantity per 40' container	936 pcs

## SPECIFICATIONS

STC Irradiance 1000W/m<sup>2</sup> Module Temperature 25°C AM=1.5

Module Type <sup>(1)</sup>	TKA430M-108B		TKA435M-108B		TKA440M-108B		TKA445M-108B		TKA450M-108B	
	STC <sup>(2)</sup>	NMOT <sup>(3)</sup>	STC <sup>(2)</sup>	NMOT <sup>(3)</sup>	STC <sup>(2)</sup>	NMOT <sup>(3)</sup>	STC <sup>(2)</sup>	NMOT <sup>(3)</sup>	STC <sup>(2)</sup>	NMOT <sup>(3)</sup>
Maximum Power (P <sub>max</sub> )	430Wp	321Wp	435Wp	325Wp	440Wp	329Wp	445Wp	333Wp	450Wp	337Wp
Maximum Power Voltage (V <sub>mp</sub> )	33.16V	30.26V	33.36V	30.44V	33.56V	30.62V	33.76V	33.81V	33.96V	30.95V
Maximum Power Current (I <sub>mp</sub> )	12.97A	10.61A	13.05A	10.68A	13.12A	10.75A	13.19A	10.82A	13.25A	10.89A
Open-circuit Voltage (V <sub>oc</sub> )	39.43V	37.02V	39.63V	37.21V	39.83V	37.40V	40.03V	37.58V	40.23V	37.76V
Short-circuit Current (I <sub>sc</sub> )	14.01A	11.31A	14.08A	11.37A	14.15A	11.43A	14.23A	11.49A	14.31A	11.55A
Module Efficiency (%)	22.02%		22.28%		22.53%		22.79%		23.04%	
V <sub>oc</sub> and I <sub>sc</sub> tolerance	±3%									
Operating Temperature (°C)	-40°C~+85°C									
Maximum system voltage	1500V									
Maximum series fuse rating	25A									
Power tolerance	0 ~ +5W									
Temperature coefficients of P <sub>max</sub>	-0.29%/°C									
Temperature coefficients of V <sub>oc</sub>	-0.25%/°C									
Temperature coefficients of I <sub>sc</sub>	0.045%/°C									
Nominal operating cell temperature (NOCT)	45±2 °C									