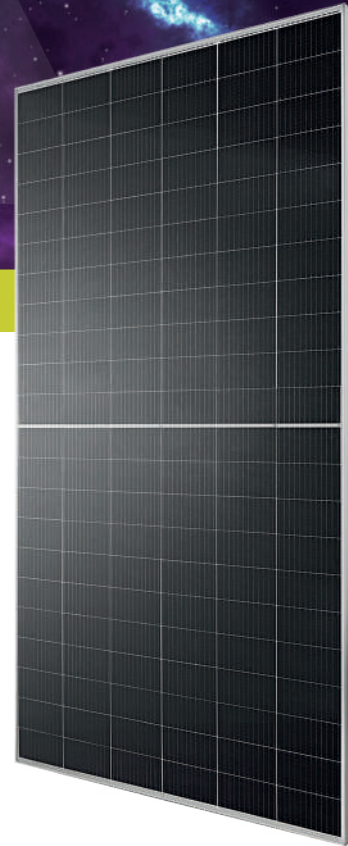


**HC MONO**  
**670 - 690 Watt**



**KEY FEATURES**

Our solar cells offer high conversion efficiency to ensure the highest quality.

Our high performing modules have an industry low tolerance of 0 ~ +5W.

The modules can withstand high wind-pressure, snow loads and extreme temperatures.

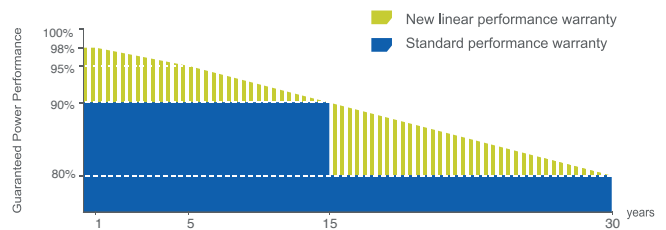
Passed IEC 5400 Pa mechanical loading test  
PID Resistance Available.

**QUALITY AND SAFETY**

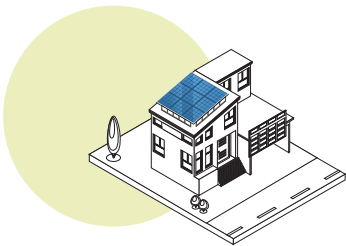
- ⌚ Industry leading power output warranty  
15 years/90%  
30 years/80%
- ⌚ 25-year warranty on materials & workmanship
- 🔥 Fire Rating: Class 1



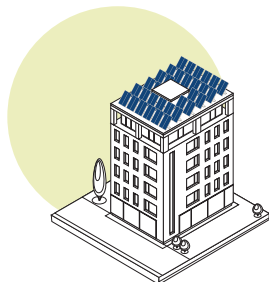
**PREMIUM PERFORMANCE WARRANTY**



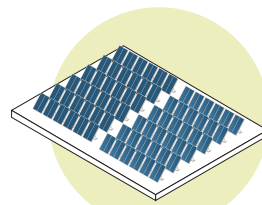
**APPLICATIONS**



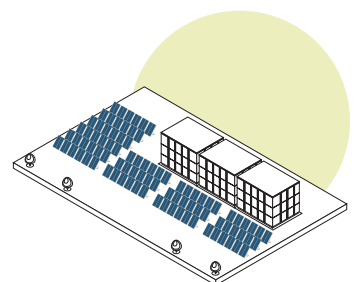
On-grid residential roof-tops



On-grid commercial - industrial roof-tops

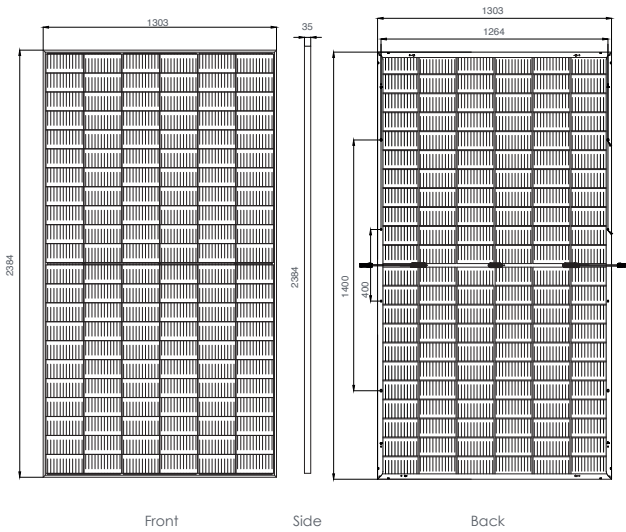


Solar power plants

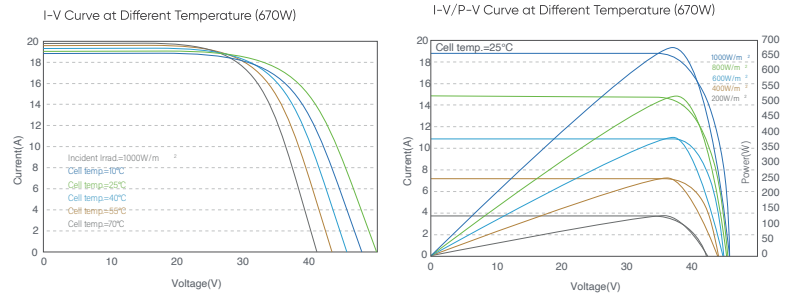


Off-grid systems

## ENGINEERING DRAWINGS



## ELECTRICAL PERFORMANCE & TEMPERATURE DEPENDENCE



## PACKAGING CONFIGURATION

Standard packaging	31pcs/pallet
Module quantity per 40' container	558pcs/40HQ

## MECHANICAL CHARACTERISTICS

Cell Type	Orion Mono-crystalline 210mm
No. of cells	132 (2x66)
Dimensions	2384x1303x35mm
Weight	33.50kg
Front Glass	3.2mm, High Transmission, Low Iron, AR Coating Glass
Frame	Anodized Aluminium Alloy
Junction Box	IP68 Rated
Output Cables	TÜV 1x4.0mm <sup>2</sup> / UL 12AWG, Length:400mm/1100mm

## SPECIFICATIONS

Module Type	TKA670M-132	TKA675M-132	TKA680M-132	TKA685M-132	TKA690M-132
Maximum Power at STC (P <sub>max</sub> )	670Wp	675Wp	680Wp	685Wp	690Wp
Maximum Power Voltage (V <sub>mp</sub> )	38.20V	38.40V	38.60V	38.80V	39.00V
Maximum Power Current (I <sub>mp</sub> )	17.55A	17.59A	17.63A	17.67A	17.71A
Open-circuit Voltage (V <sub>oc</sub> )	46.10V	46.30V	46.50V	46.70V	46.90V
Short-circuit Current (I <sub>sc</sub> )	18.62A	18.66A	18.71A	18.75A	18.80A
Module Efficiency (%)	21.57%	21.73%	21.89%	22.05%	22.21%
Operating Temperature (°C)	-40°C~+85°C				
Maximum system voltage	1500V DC				
Maximum series fuse rating	35A				
Power tolerance	0 ~ +5W				
Temperature coefficients of P <sub>max</sub>	-0.35%/°C				
Temperature coefficients of V <sub>oc</sub>	-0.28%/°C				
Temperature coefficients of I <sub>sc</sub>	0.048%/°C				
Nominal operating cell temperature (NOCT)	45±2 °C				

STC Irradiance 1000W/m<sup>2</sup> Module Temperature 25°C AM=1.5