

HALF CUT
585 - 605 Watt



KEY FEATURES




Our solar cells offer high conversion efficiency to ensure the highest quality.

Our high performing modules have an industry low tolerance of 0 ~ +5W.

The modules can withstand high wind-pressure, snow loads and extreme temperatures.

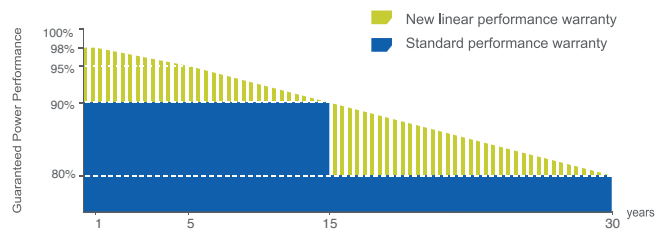
Passed IEC 5400 Pa mechanical loading test
PID Resistance Available.

QUALITY AND SAFETY

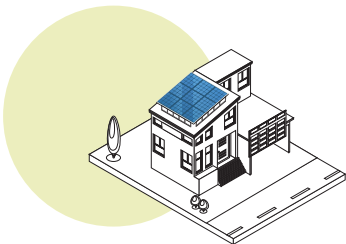
-  Industry leading power output warranty
 15 years/90%
 30 years/80%
-  25-year warranty on materials & workmanship
-  Fire Rating: Class 1



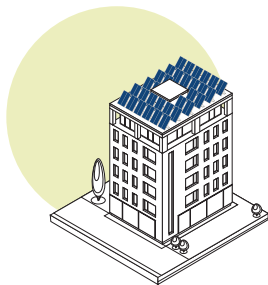
PREMIUM PERFORMANCE WARRANTY



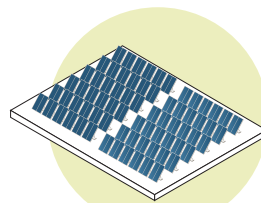
APPLICATIONS



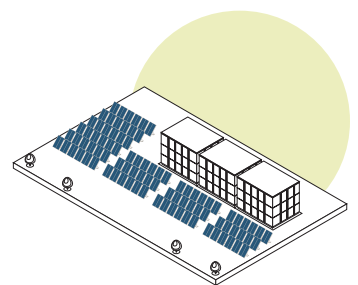
On-grid residential roof-tops



On-grid commercial - industrial roof-tops



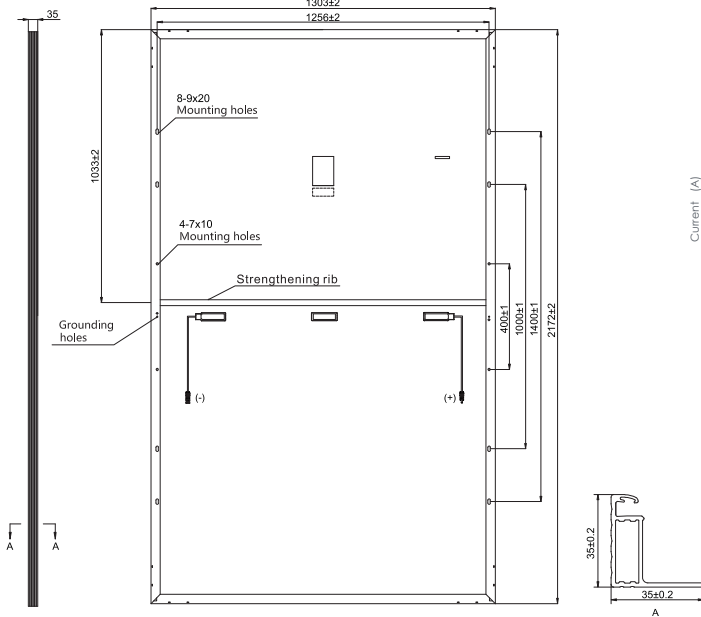
Solar power plants



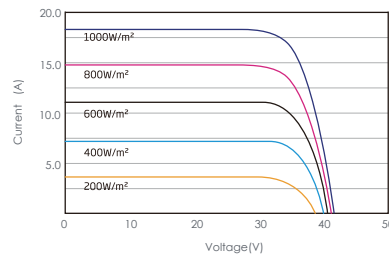
Off-grid systems

ENGINEERING DRAWINGS

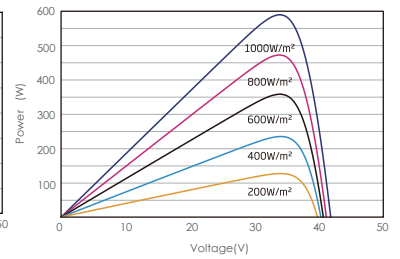
ELECTRICAL PERFORMANCE & TEMPERATURE DEPENDENCE



I-V CURVES OF PV MODULE(595 W)



P-V CURVES OF PV MODULE(595W)



PACKAGING CONFIGURATION

Standard packaging	31pcs/pallet
Module quantity per 40' container	527pcs/40HQ

MECHANICAL CHARACTERISTICS

Cell Type	Orion Perc Mono-crystalline (210x105mm)
No.of cells	120 (6x20)
Dimensions	2172x1303x35mm
Weight	30.9kg
Front Glass	3.2mm, High Transmission, Low Iron, AR Coating Glass
Frame	Anodized Aluminium Alloy
Junction Box	IP68 Rated
Output Cables	TÜV 1x4.0mm ² / UL 12AWG, Length:400mm/1100mm

SPECIFICATIONS

Module Type	TKA585M-120	TKA590M-120	TKA595M-120	TKA600M-120	TKA605M-120
Maximum Power at STC(Pmax)	585Wp	590Wp	595Wp	600Wp	605Wp
Maximum Power Voltage (Vmp)	33.80V	34.00V	34.20V	34.40V	34.60V
Maximum Power Current (Imp)	17.31A	17.35A	17.40A	17.45A	17.49A
Open-circuit Voltage (Voc)	40.90V	41.10V	41.30V	41.50V	41.70V
Short-circuit Current (Isc)	18.37A	18.42A	18.47A	18.52A	18.57A
Module Efficiency (%)	20.67%	20.85%	21.02%	21.20%	21.38%
Operating Temperature (°C)	-40°C~+85°C				
Maximum system voltage	1500V DC				
Maximum series fuse rating	30A				
Power tolerance	0 ~ +5W				
Temperature coefficients of Pmax	-0.35%/°C				
Temperature coefficients of Voc	-0.28%/°C				
Temperature coefficients of Isc	0.048%/°C				
Nominal operating cell temperature (NOCT)	45±2 °C				

STC Irradiance 1000W/m²



Module Temperature 25°C



AM=1.5