

HC MONO
540 - 555 Watt



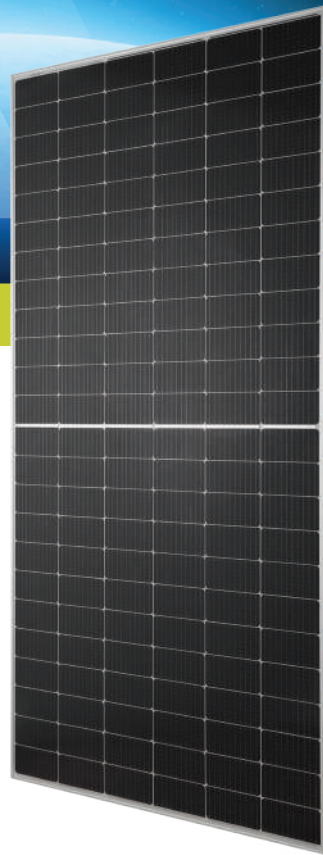
KEY FEATURES

Our solar cells offer high conversion efficiency to ensure the highest quality.

Our high performing modules enable cost savings in mounting, cabling and labour of up to 15%.

The modules can withstand high wind-pressure, snow loads and extreme temperatures.

Passed IEC 5400 Pa mechanical loading test
PID Resistance Available.

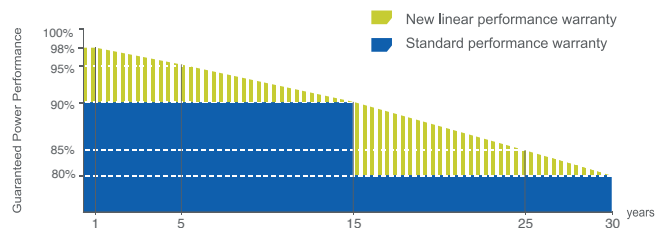


QUALITY AND SAFETY

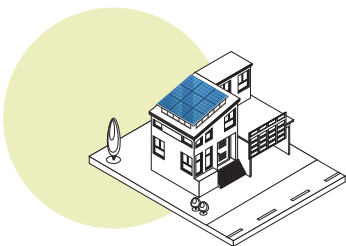
- Industry leading power output warranty
 15 years/90%,
 30 years/80%,
- 25-year warranty on materials & workmanship
- Fire Rating: Class 1



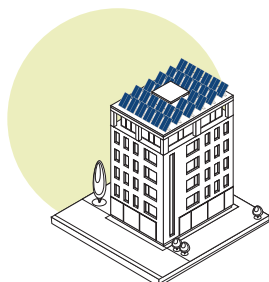
PREMIUM PERFORMANCE WARRANTY



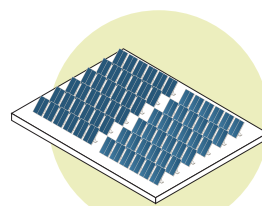
APPLICATIONS



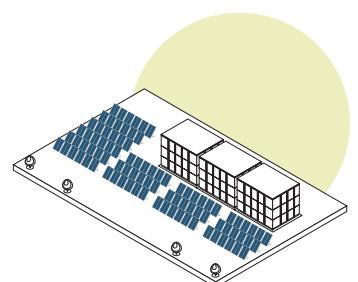
On-grid residential roof-tops



On-grid commercial - industrial roof-tops

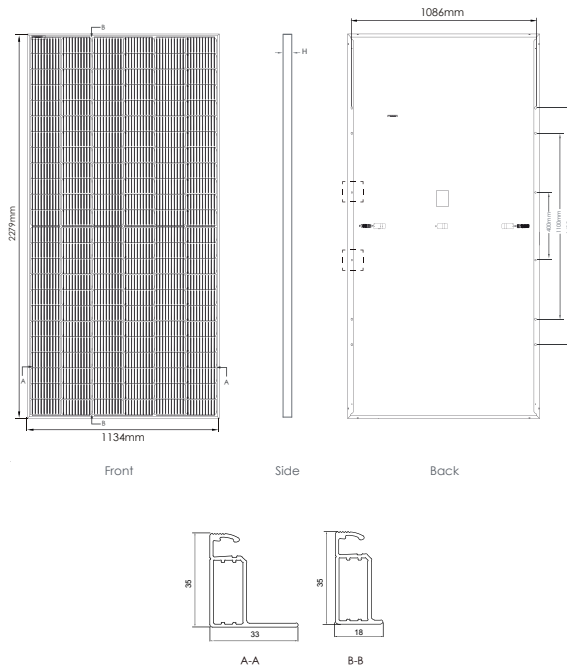


Solar power plants

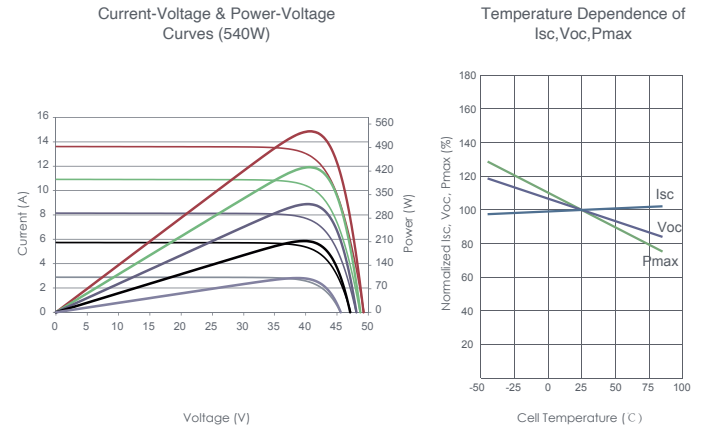


Off-grid systems

ENGINEERING DRAWINGS



ELECTRICAL PERFORMANCE & TEMPERATURE DEPENDENCE



MECHANICAL CHARACTERISTICS

Cell Type	Orion P-Type Mono-crystalline (182x91mm)
No. of cells	144 (6x24)
Dimensions	2279x1134x35mm
Weight	28kg
Front Glass	3.2mm, AR Coating, High Transmission, Low Iron, Tempered Glass
Frame	Anodized Aluminium Alloy (Silver/Black optional)
Junction Box	IP68 Rated
Output Cables	TÜV 1x4.0mm ² /UL 12AWG, Length:1200mm

PACKAGING CONFIGURATION

Standard packaging	62 pcs / pallet
Module quantity per 20' container	N/A
Module quantity per 40' container	620pcs/40HQ

SPECIFICATIONS

Module Type ⁽¹⁾	TKA540M-144		TKA545M-144		TKA550M-144		TKA555M-144	
	STC ⁽²⁾	NMOT ⁽³⁾	STC ⁽²⁾	NMOT ⁽³⁾	STC ⁽²⁾	NMOT ⁽³⁾	STC ⁽²⁾	NMOT ⁽³⁾
Maximum Power (Pmax)	540Wp	409Wp	545Wp	413Wp	550Wp	417Wp	555Wp	421Wp
Maximum Power Voltage (Vmp)	41.20V	39.44V	41.40V	39.67V	41.60V	39.9V	41.80V	40.14V
Maximum Power Current (Imp)	13.11A	10.37A	13.17A	10.41A	13.23A	10.45A	13.30A	10.49A
Open-circuit Voltage (Voc)	49.40V	47.63V	49.60V	47.87V	49.80V	48.1V	50.00V	48.24V
Short-circuit Current (Isc)	13.87A	10.99A	13.93A	11.03A	13.99A	11.07A	14.05A	11.10A
Module Efficiency (%)	20.89%		21.09%		21.28%		21.48%	
Voc and Isc tolerance	±3%							
Operating Temperature(°C)	-40°C~+85°C							
Maximum system voltage	1500V							
Maximum series fuse rating	20A							
Temperature coefficients of Pmax	-0.35%/°C							
Temperature coefficients of Voc	-0.28%/°C							
Temperature coefficients of Isc	0.048%/°C							
Nominal operating cell temperature (NOCT)	45±2 °C							

STC Irradiance 1000W/m² Module Temperature 25°C AM=1.5