

**HALF CUT**  
**585 - 605 Watt**



## KEY FEATURES




Our solar cells offer high conversion efficiency to ensure the highest quality.

Our high performing modules enable cost savings in mounting, cabling and labour of up to 15%.

The modules can withstand high wind-pressure, snow loads and extreme temperatures.

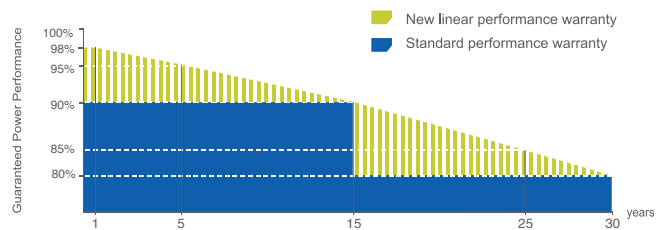
Passed IEC 5400 Pa mechanical loading test  
PID Resistance Available.

## QUALITY AND SAFETY

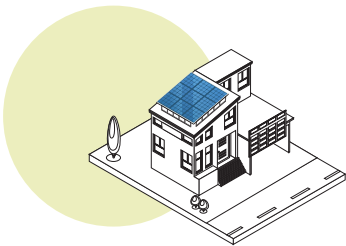
-  Industry leading power output warranty  
 15 years/90%  
 30 years/80%
-  25-year warranty on materials & workmanship
-  Fire Rating: Class 1



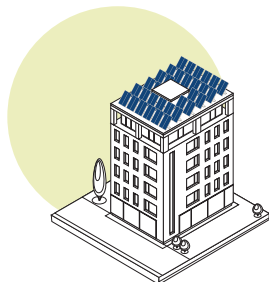
## PREMIUM PERFORMANCE WARRANTY



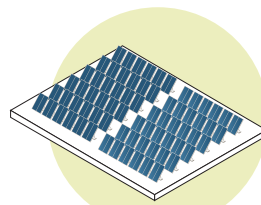
## APPLICATIONS



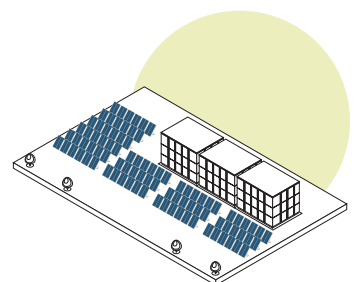
On-grid residential roof-tops



On-grid commercial - industrial roof-tops

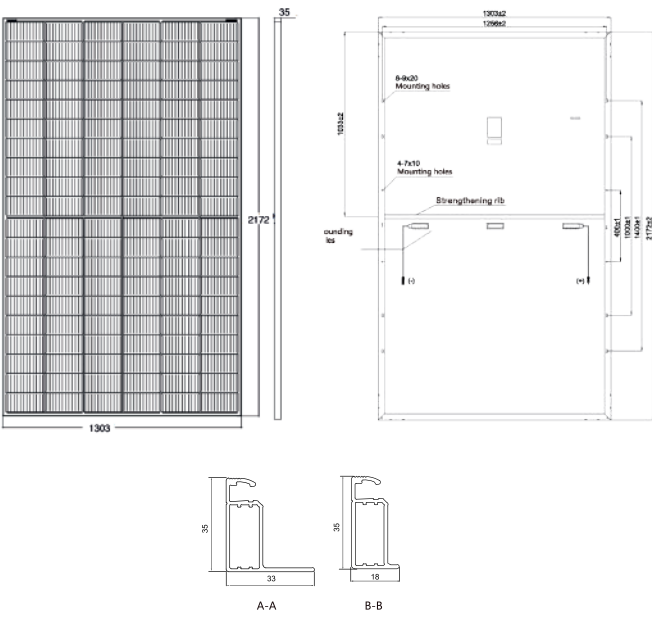


Solar power plants



Off-grid systems

## ENGINEERING DRAWINGS



## PACKAGING CONFIGURATION

Standard packaging	31pcs/pallet
Module quantity per 40' container	527pcs/40HQ

## SPECIFICATIONS

Module Type <sup>(1)</sup>	TKA585M-120		TKA590M-120		TKA595M-120		TKA600M-120		TKA605M-120	
	STC <sup>(2)</sup>	NMOT <sup>(3)</sup>	STC <sup>(2)</sup>	NMOT <sup>(3)</sup>	STC <sup>(2)</sup>	NMOT <sup>(3)</sup>	STC <sup>(2)</sup>	NMOT <sup>(3)</sup>	STC <sup>(2)</sup>	NMOT <sup>(3)</sup>
Maximum Power (Pmax)	585Wp	444Wp	590Wp	448Wp	595Wp	452Wp	600Wp	456Wp	605Wp	460Wp
Maximum Power Voltage (Vmp)	33.80V	31.65V	34.00V	31.80V	34.20V	31.94V	34.40V	32.09V	34.60V	32.24V
Maximum Power Current (Imp)	17.31A	14.03A	17.35A	14.09A	17.40A	14.15A	17.45A	14.21A	17.49A	14.27A
Open-circuit Voltage (Voc)	40.90V	38.52V	41.10V	38.72V	41.30V	38.92V	41.50V	39.11V	41.70V	39.31V
Short-circuit Current (Isc)	18.37A	14.90A	18.42A	14.94A	18.47A	14.98A	18.52A	15.94A	18.57A	15.98A
Module Efficiency (%)	20.67%		20.85%		21.02%		21.20%		21.38%	
Operating Temperature (°C)	-40°C~+85°C									
Maximum system voltage	1500V DC									
Maximum series fuse rating	30A									
Temperature coefficients of Pmax	-0.35%/°C									
Temperature coefficients of Voc	-0.28%/°C									
Temperature coefficients of Isc	0.048%/°C									
Nominal operating cell temperature (NOCT)	45±2 °C									

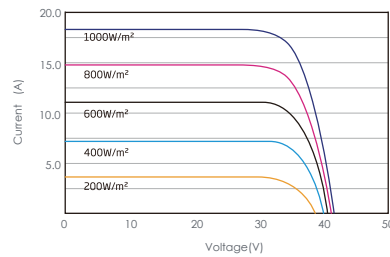
STC  Irradiance 1000W/m<sup>2</sup>

 Module Temperature 25°C

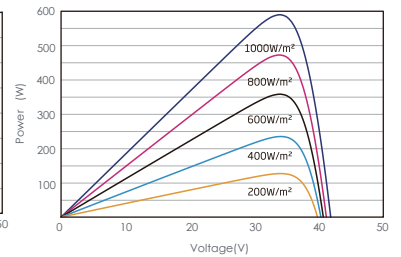
 AM=1.5

## ELECTRICAL PERFORMANCE & TEMPERATURE DEPENDENCE

I-V CURVES OF PV MODULE(595 W)



P-V CURVES OF PV MODULE(595W)



## MECHANICAL CHARACTERISTICS

Cell Type	Orion P-Type Mono-crystalline (210x105mm)
No.of cells	120 (6×20)
Dimensions	2172×1303×35mm
Weight	30.9kg
Front Glass	3.2mm, High Transmission, Low Iron, AR Coating Glass, Tempered Glass
Frame	Anodized Aluminium Alloy (Silver/Black optional)
Junction Box	IP68 Rated
Output Cables	TÜV 1×4.0mm <sup>2</sup> / UL 12AWG, Length:1400mm