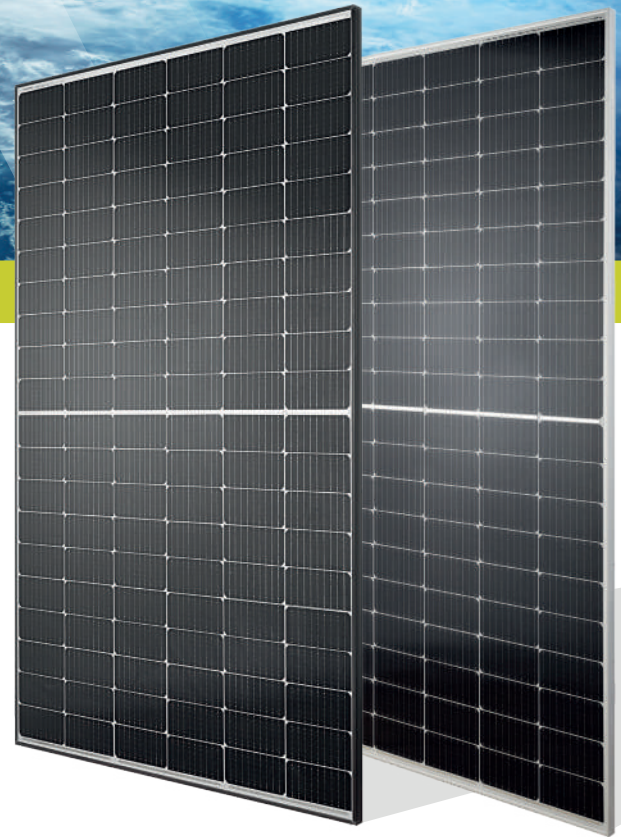


HC MONO
400 Watt



KEY FEATURES




Our solar cells offer high conversion efficiency to ensure the highest quality

Our high performing modules have an industry low tolerance of 0 ~ +5W

The modules can withstand high wind-pressure, snow loads and extreme temperatures

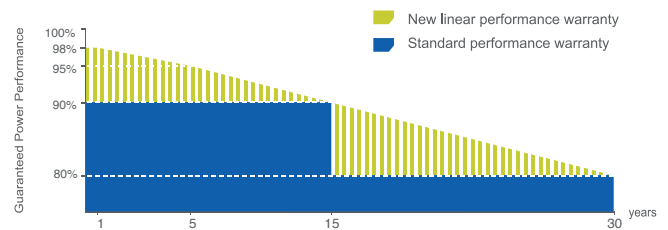
Passed IEC 5400 Pa mechanical loading test

QUALITY AND SAFETY

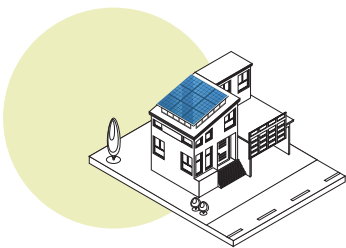
-  Industry leading power output warranty
 15 years/90%
 30 years/80%
-  25-year warranty on materials & workmanship
-  Fire Rating: Class 1



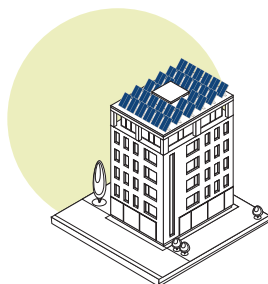
PREMIUM PERFORMANCE WARRANTY



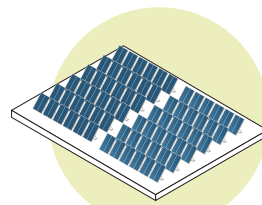
APPLICATIONS



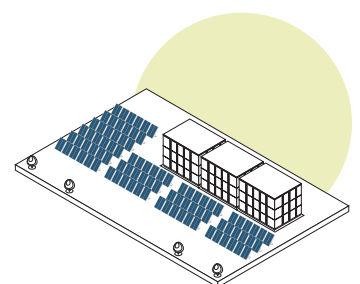
On-grid residential roof-tops



On-grid commercial - industrial roof-tops

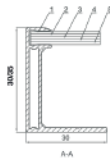
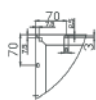
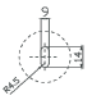
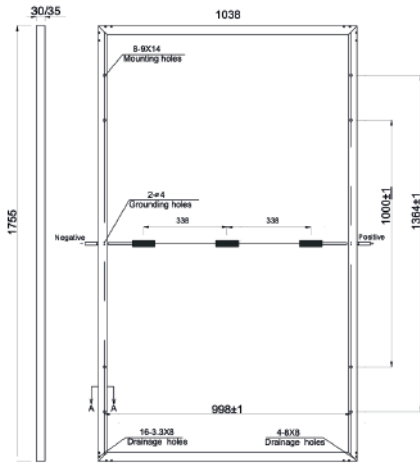


Solar power plants



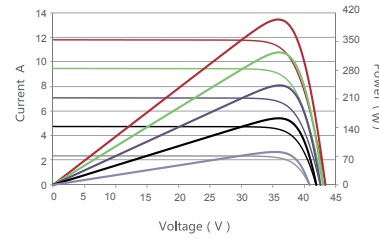
Off-grid systems

ENGINEERING DRAWINGS

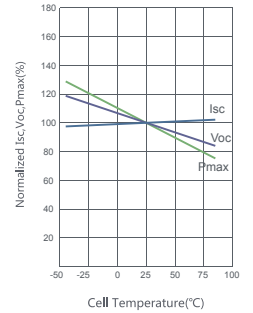


ELECTRICAL PERFORMANCE & TEMPERATURE DEPENDENCE

Current-Voltage & Power-Voltage Curves (400W)



Temperature Dependence of Isc, Voc, Pmax



MECHANICAL CHARACTERISTICS

Cell Type	Orion Perc Mono-crystalline (166mm×83mm)
No. of cells	120 (6×20)
Dimensions	1755×1038×30mm / 1755x1038x35mm
Weight	20.0kg
Front Glass	Orion Technology
Frame	Anodized Aluminium Alloy(Silver/Black optional)
Junction Box	IP68 Rated
Output Cables	TÜV 1×4.0mm ² UL 12AWG, Length:1100mm

PACKAGING CONFIGURATION

Standard packaging (pallet)	30mm/35mm - frame: 76/66 pcs
Module quantity per 20' container	30mm/35mm - frame: 372/432 pcs
Module quantity per 40' container	30mm/35mm - frame: 988 (1014)/858 pcs

SPECIFICATIONS

Module Type	TKA400M-120
Maximum Power at STC(Pmax)	400Wp
Maximum Power Voltage (Vmp)	34.7V
Maximum Power Current (Imp)	11.53A
Open-circuit Voltage (Voc)	42.20V
Short-circuit Current (Isc)	12.13A
Cell Efficiency (%)	21.62%
Module Efficiency (%)	20.6%
Operating Temperature(°C)	-40°C~+85°C
Maximum system voltage	1500V
Maximum series fuse rating	20A
Power tolerance	0 ~ +5W
Temperature coefficients of Pmax	-0.43%/°C
Temperature coefficients of Voc	-0.30%/°C
Temperature coefficients of Isc	0.04%/°C
Nominal operating cell temperature (NOCT)	45±2 °C

STC Irradiance 1000W/m²



Module Temperature 25°C



AM=1.5